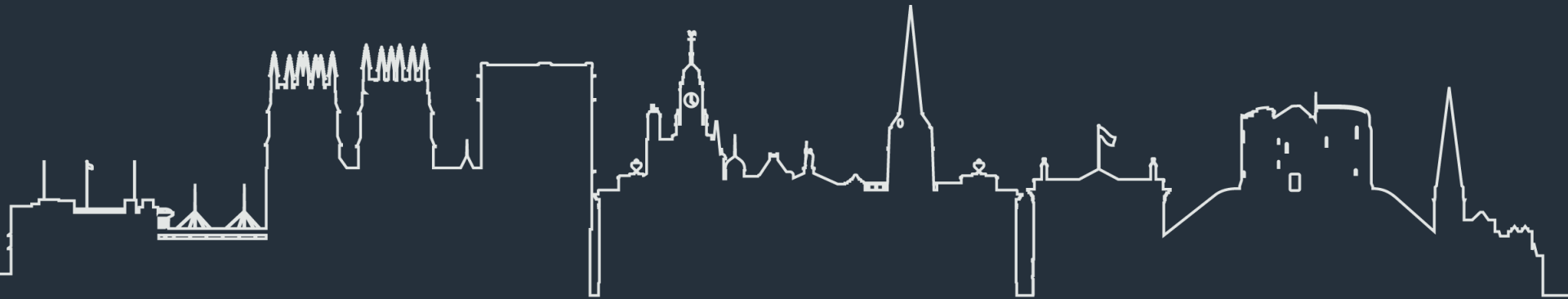


# City of York Council Parks Investment Fund

18 March 2026



# Introduction

- Kristina Davey
- Project Manager
- City of York Council Park Investment Fund



**Working together** to improve and make a difference

# City of York Council – Park



## Investment Fund

- Fund of £750,000 approved September 2025 to revitalise parks, play areas, and public green spaces across the city.
- Other sources of funding will boost fund to around £925,000.
- Priority given to areas of higher deprivation, where there is ageing play equipment and infrastructure and will support the council's ambition to increase the number of Green Flag parks in York.
- The Councils' aim is to encourage more people to spend time outdoors, improve accessibility, social inclusion and play.

A dark silhouette of the York skyline, including various buildings, a clock tower, and a church spire.

**Working together** to improve and make a difference

- Weighted scoring system
- 19 schemes approved for investment.
- Engagement with children and communities to gain insight into how the projects should progress.
- Crombie Avenue and Ashton Avenue play areas will benefit in Clifton

# Ashton Avenue Play Area

(£50k + additional £20k from funding bid)

- Refurbishment of fenced play area
  - More welcoming gate and fence access
  - Potential young peoples' art project with The Art of Protest
  - Complete replacement of play equipment
  - Consultation/engagement May 2026
  - Voting September 2026

# Crombie Avenue Play Area (approx. £80k)



- Refurbished playground
- Resurfaced MUGA
- Potential art & sports project with young people with The Art of Protest (funding bid dependent)
- New footpath access to the play area and MUGA

A dark silhouette of the York skyline, including various buildings and spires, positioned at the bottom of the slide.

**Working together** to improve and make a difference

# Crombie Avenue Play Area



# What children from Clifton Green Primary School asked for

- A wide range of play equipment
- For a variety of ages
- The play area should be accessible and inclusive

# Play equipment and facilities

- To include:
- Swings, monkey bars, roundabout and spinning bowl
- A multi-play unit or units which have ‘impact’ and include a slide
- New seating that caters for a variety of needs

# Option to include the existing slide and seesaw



# Other Structural Improvements

- New fencing across road-side of playground
- New gates at either end
- Space for future tree planting that will provide shade
- Good sight lines through the play area

# Option 1





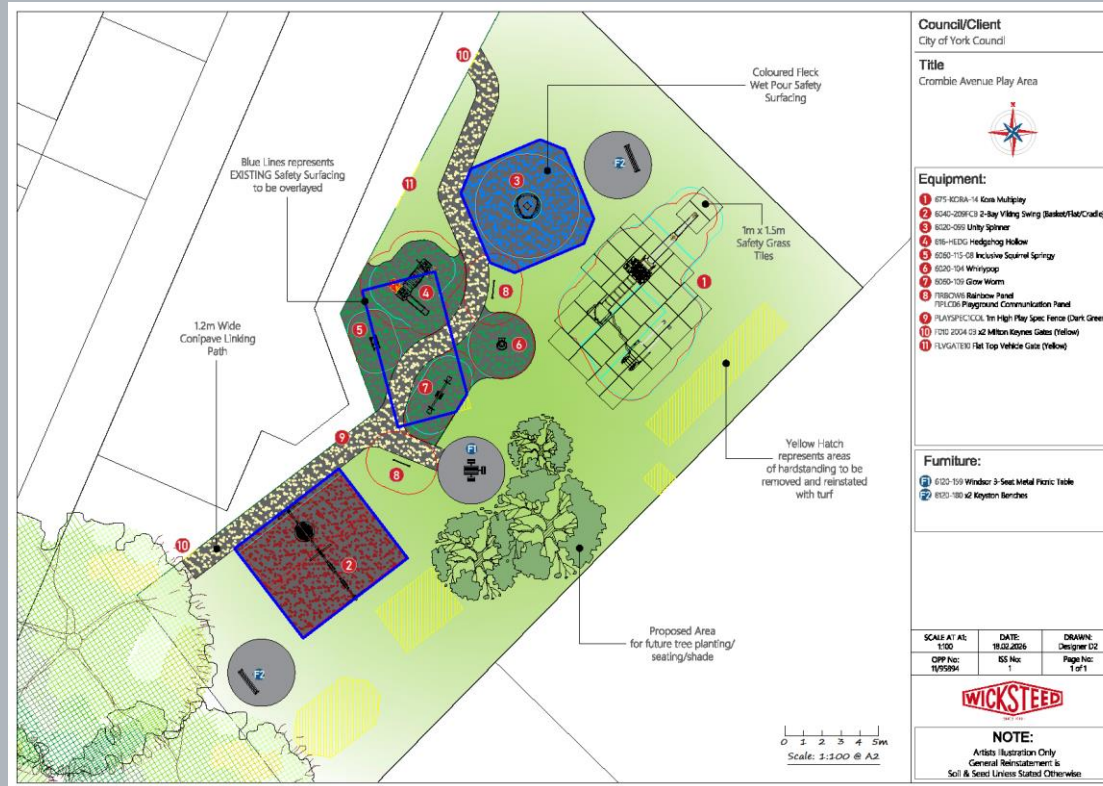
# Option 1 includes

- 4-tower modular unit for older and younger children (2 slides, fireman's pole, traverse net, trick ladder, climbing wall, monkey bars, ground level serving hatch)
- Springer with high backrest, Sensory Panels, Inclusive Swing, Basket Swing, Wheelchair Accessible Roundabout
- Seesaw, Spinning Bowl, range of Swings (basket, inclusive, flat, cradle and parent/child), Tornado Spinner, Vault Bars
- Wheelchair accessible Picnic Bench, Mushroom Seating, 2 x Benches, Accessible Ground Surfaces

# Option 2



# Option 2 – Site Plan



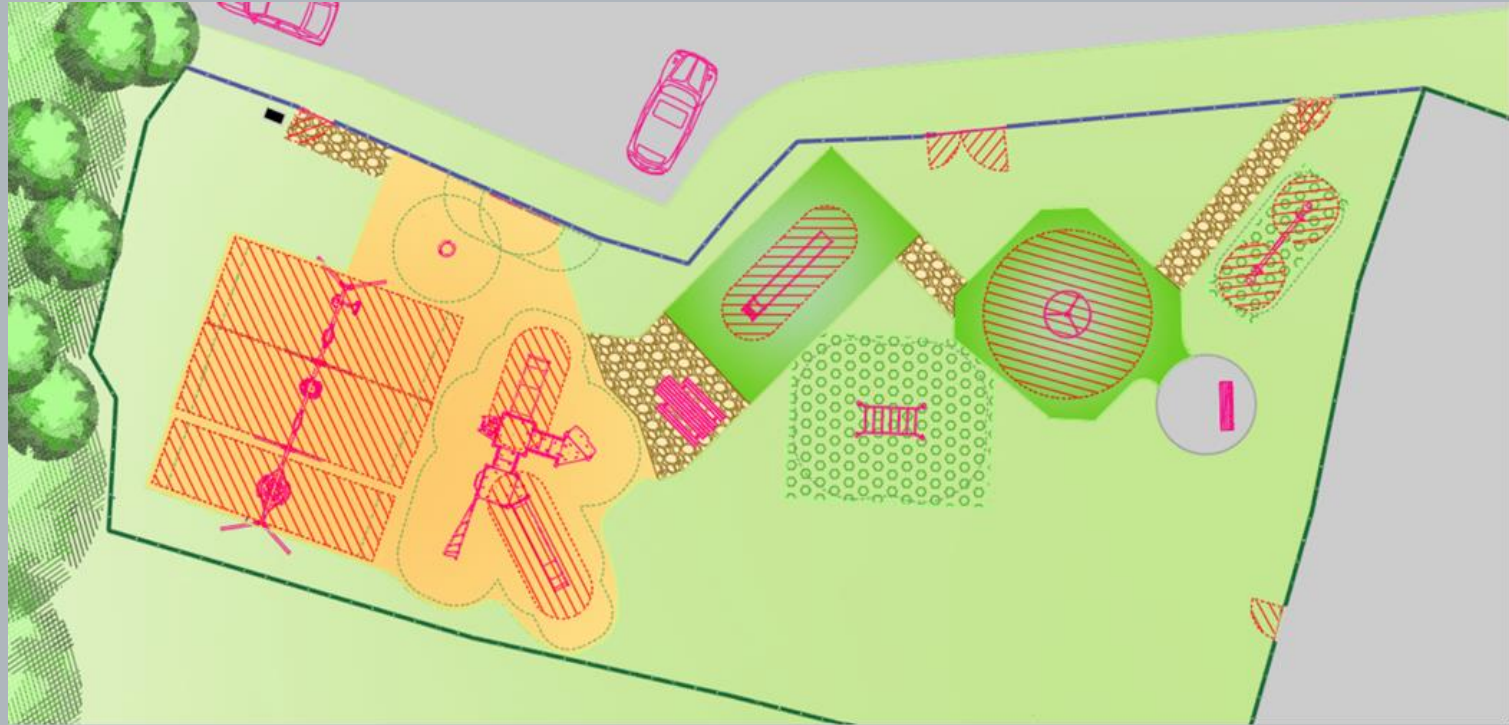
# Option 2 includes

- 2 x multi-play units for younger and older age range (slides, nursery rhyme panels, ladder, climbing wall, crossover bridge, fireman's pole, monkey bars)
- Springer with high backrest, Sensory Panels, Basket Swing, Wheelchair Accessible Roundabout
- Seesaw, Spinning Bowl, range of Swings (flat, cradle, basket)
- Wheelchair accessible Picnic Bench, 2 x Benches, Accessible Ground Surfaces

# Option 3



# Option 3 – Site Plan



**Working together** to improve and make a difference

# Option 3 includes

- Multi-Play Unit for older and younger children (2 slides, shared platforms, climbing wall, lower-level hammock)
- Sensory Panels, Accessible Roundabout, Inclusive Swing
- Seesaw, Spinning Bowl, range of Swings (inclusive, cradle, flat and parent/child), Monkey Bars
- Wheelchair accessible Picnic Bench, Accessible Ground Surfaces
- Retain and paint existing slide

# Please vote for your favourite design



- Use one sticky dot and place it on either the sheet for Option 1, Option 2 or Option 3 to vote for your favourite play area design.
- Voting at play area session and Clifton Green Primary.
- Votes will be counted and the winning design will be ordered.
- The new play area will be installed in a few months time.

A dark silhouette of the York skyline, including various buildings, a clock tower, and a church spire.

**Working together** to improve and make a difference

# Any questions?



**Working together** to improve and make a difference